

12-5-12

AREA OF TRAPEZOIDS

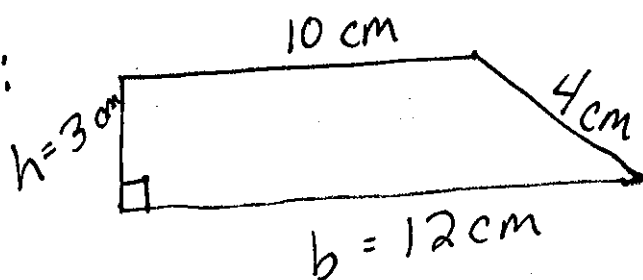
$$A = \frac{1}{2}h(b_1 + b_2)$$

1st add $b_1 + b_2$

2nd find $\frac{1}{2}$ of the height (\div by 2)

3rd multiply the 2 answers

Ex:



$$A = \frac{1}{2}h(b_1 + b_2)$$

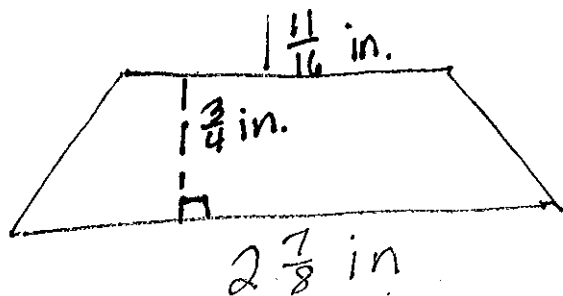
$$A = \frac{1}{2} \times 3 (10 + 12)$$

$$\textcircled{1} A = \frac{1}{2} \times 3 (22)$$

$$\textcircled{2} A = (1.5)(22)$$

$$\textcircled{3} A = 33 \text{ cm}^2$$

Ex:



$$A = \frac{1}{2}h(b_1 + b_2)$$

$$A = \frac{1}{2} \times \frac{3}{4} (1\frac{11}{16} + 2\frac{7}{8})$$

$$A = (\frac{3}{8})(4\frac{9}{16})$$

$$A = 1\frac{91}{128} \text{ in}^2$$